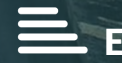




**11 Windmill Terrace**  
St Thomas, Swansea, SA1 8DN  
£800 PCM





## 11 Windmill Terrace

### St Thomas, Swansea, SA1 8DN

2 BEDROOM UNFURNISHED MID TERRACE FAMILY HOME with NEW KITCHEN and recently REDECORATED THROUGHOUT with NEW DOWNSTAIRS CARPETS

Located in St Thomas this 2 Bedroom Home is in a good location for access to both the City Centre and transport links to Swansea University's Bay Campus. From the Entrance Hall there is an Open Plan Lounge Dining Room, New Modern Fitted Kitchen with Washing Machine and Integrated Oven and Hob. In addition there is a Downstairs Bathroom with Over Bath Shower and from the Kitchen there is access to an Enclosed Back Garden. Both Bedrooms are located on the First Floor and other benefits include Double Glazing, Gas Central Heating and AVAILABILITY IS IMMEDIATE

VIEWINGS 7TH OF JANUARY 1PM TO 3PM & FOR APPOINTMENTS PLEASE CALL SMITH'S LETTINGS.

24 MONTH CONTRACT  
COUNCIL TAX BAND B

#### Kitchen

12'9" x 7'8" (3.896 x 2.360)

#### Lounge

21'1" x 11'5" (6.442 x 3.501)

#### Bathroom

8'6" x 5'9" (2.613 x 1.767)

#### Bedroom 1

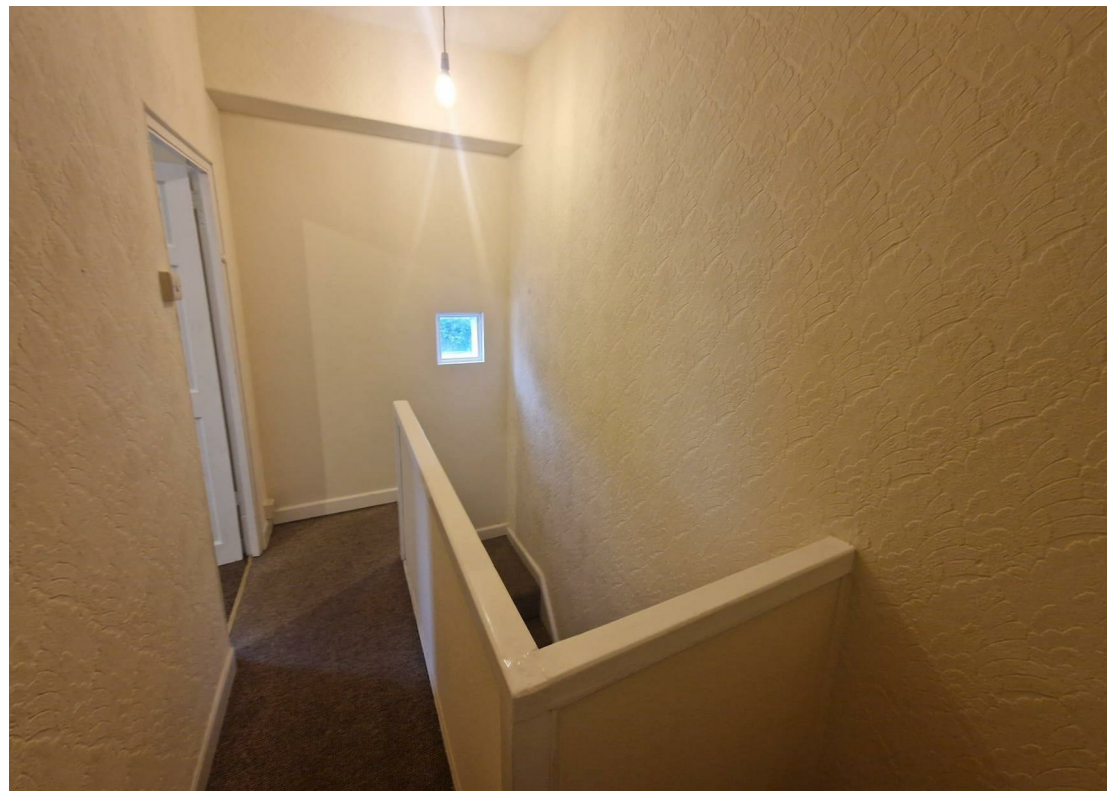
14'5" x 10'1" (4.398 x 3.082)

#### Bedroom 2

10'4" x 8'11" (3.151 x 2.733)

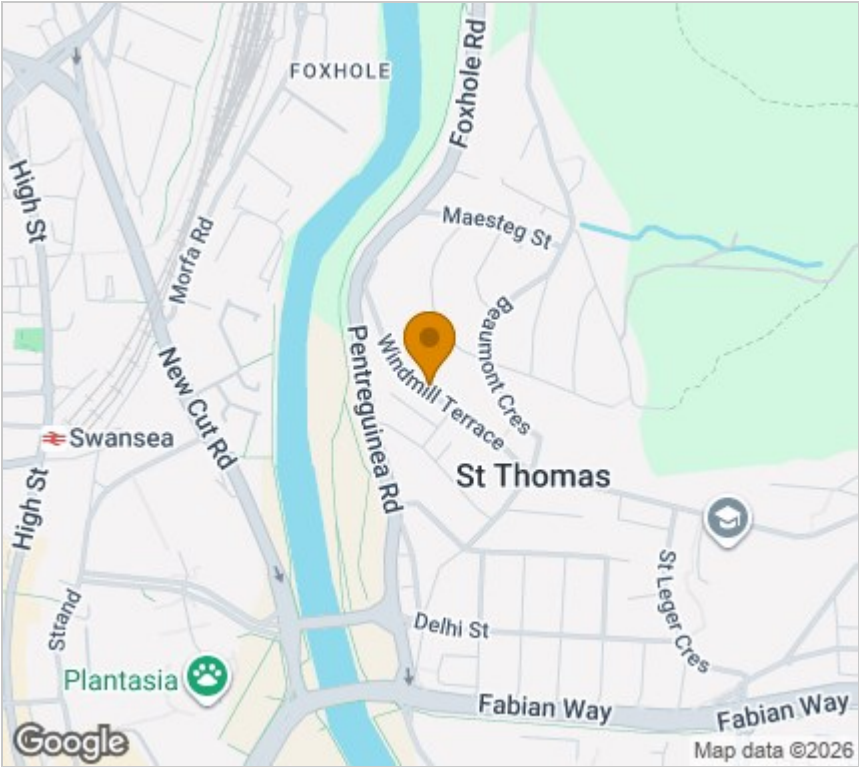






Floor Plan

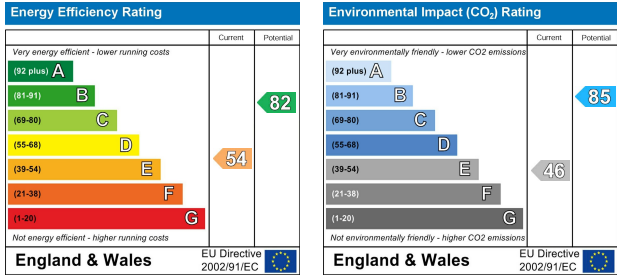
Area Map



Viewing

Please contact us on 01792 465822 if you wish to arrange a viewing appointment for this property or require further information.

Energy Efficiency Graph



Smiths Homes endeavour to maintain accurate depictions of properties in Virtual Tours, Floor Plans and descriptions, however, these are intended only as a guide and purchasers must satisfy themselves by personal inspection.

Unit 4, 270 Cockett Road, Swansea, SA2 0FN  
T: 01792 465822 E: info@smithslettings.com W: www.smithshomes.com

